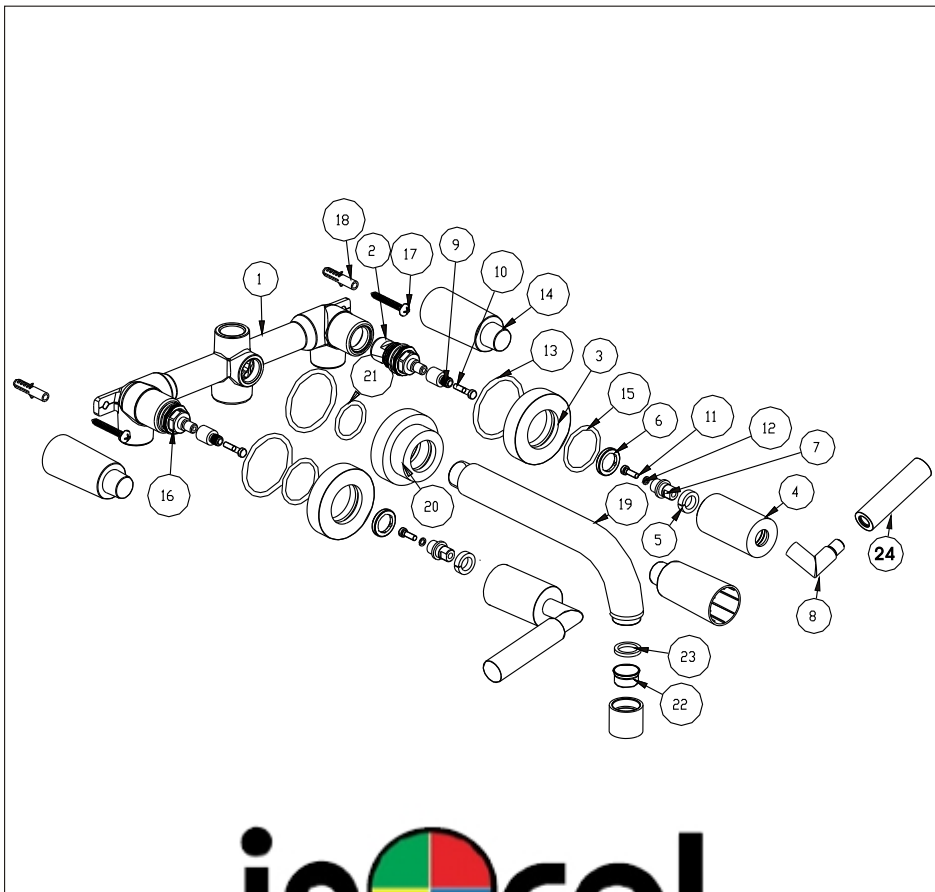


Wall mounted basin mixer

Installation Instruction

Please read this instruction carefully so as to avoid the installation difficulty.

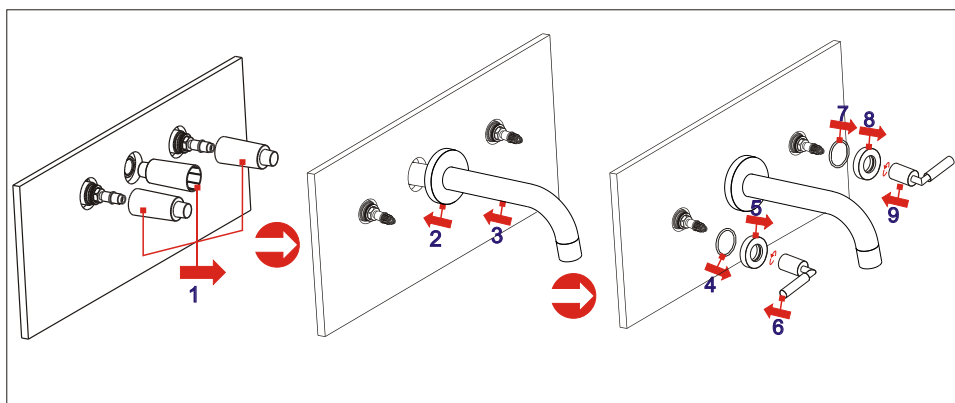
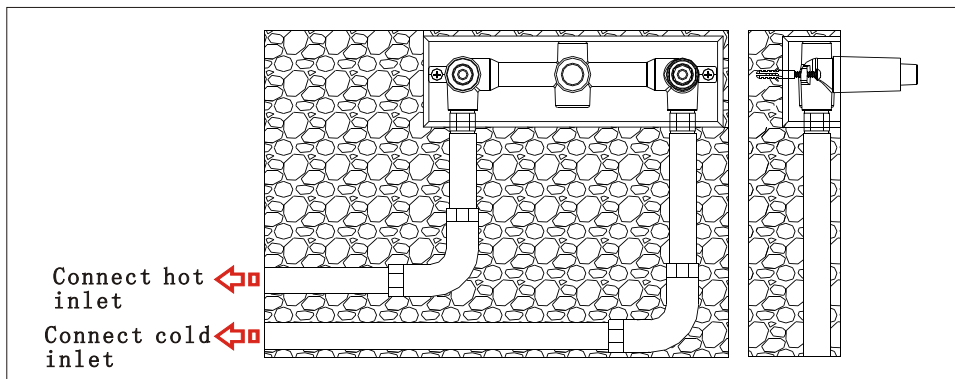


inocal

Components List

NO	Component	Material	Quantity
01	Main body	BRASS	1
02	Ceramic head part		1
03	Escutcheon	BRASS	2
04	Shank	BRASS	2
05	O-ring	Pa66	2
06	Bushing	BRASS	2
07	Longer rod	BRASS	2
08	Handle elbow	ZA	2
09	Longer rod	BRASS	2
10	Screw	S .S 304	2
11	Screw	S .S 304	2
12	Spring shim	S .S 304	2
13	O-ring	NBR Hs60	3
14	Safe cover	PE	3
15	O-ring	NBR Hs60	2
16	Ceramic head part		1
17	Self-tapping screw		2
18	Plastic sleeve	PE	2
19	Spout		1
20	Escutcheon	BRASS	1
21	O-ring	NBR Hs60	1
22	Aerator		1
23	O-ring	NBR Hs60	1
24	Handle	BRASS	2

Installation Step

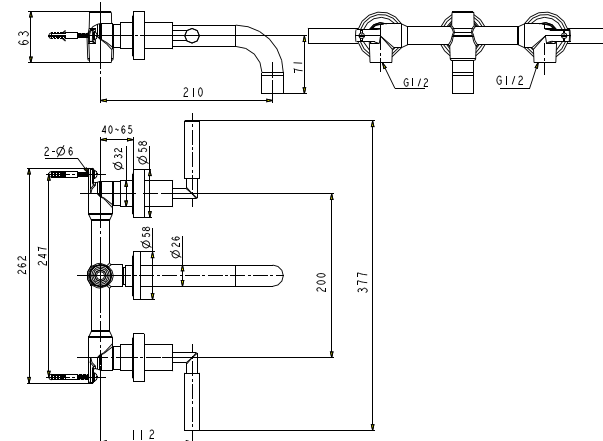


* See the fig for the position of the valve and inlet pipes.

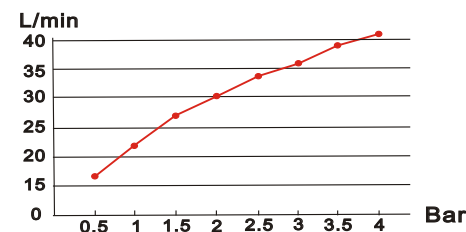
** Test:

Open the supply pipes, close the ceramic cartridge and check any leakage; open the ceramic cartridge and check the smooth water flow. Having tested, install the valve to the wall, take the safe cover apart and install the plate and handle.

Installation Fig



Flow rate Curves



Test pressure: 1.6MPa (16bar)

Flow pressure:

Min 0.05MPa

Max 1.60MPa

Recommended pressure:

0.1MPa to 0.8MPa (1 to 8 bar)

Note

1. Ensure to clean the water supply pipe before installing to avoid being jammed.
2. The cold-water supply must be connected on the right and the hot-water supply on the left.
3. Check the installing dimension according to the Figure and ensure it is installed correctly.
4. Hot-water inlet must not be over 80°C.